

SAFETY, HEALTH AND ENVIRONMENTAL INFORMATION

For construction, maintenance, cleaning and demolition risk refer to the relevant method statements and risk assessments related to this task for scheme Ref. C2016_BC/000874-27. In addition to the hazard/risks normally associated with the types of work detailed on this drawing take note of above. All works on this drawing will be carried out by a competent contractor working to a provided appropriate method statement and risk assessment.

NOTES:

LEGEND

- 20 mph speed limit and repeated 20 mph Roundel Carriageway marking
- 20 mph speed limit terminal sign (600 mm diameter) erected back to back with 30 mph sign will be required at all junctions.

This product includes mapping data licensed from Ordnance Survey with the permission of the Controller of Her Majesty's Stationery Office. © Crown copyright and database right 2016. All rights reserved. London Borough of Barnet. Licence No 100017674

REVISION			
Revision Details	Design/Check	Date	Rev.
Initial Issue	CLM / SHC	20.03.17	0

Purpose of Issue: **FOR INFORMATION**

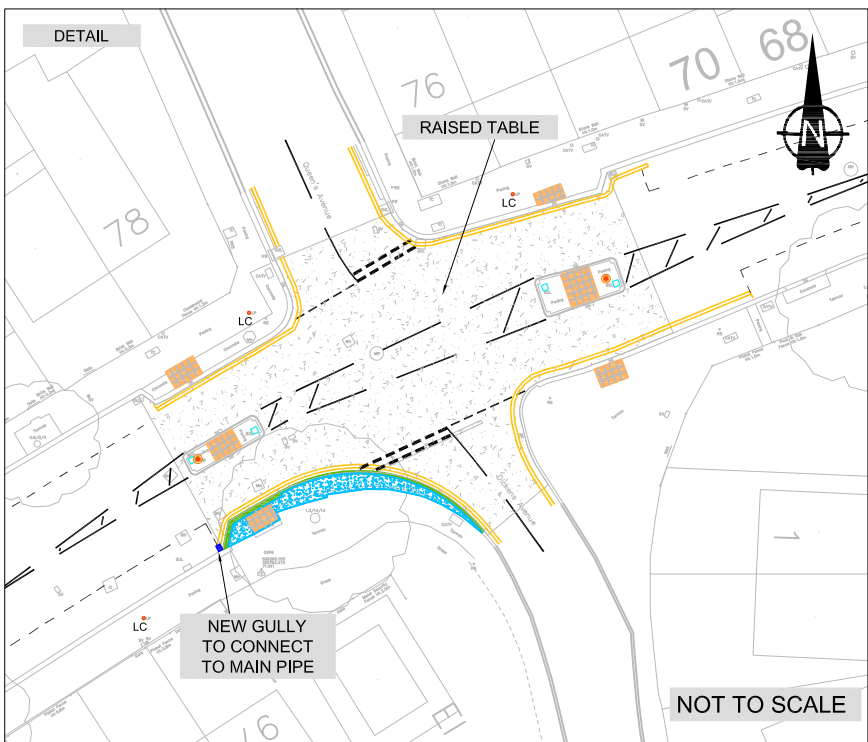
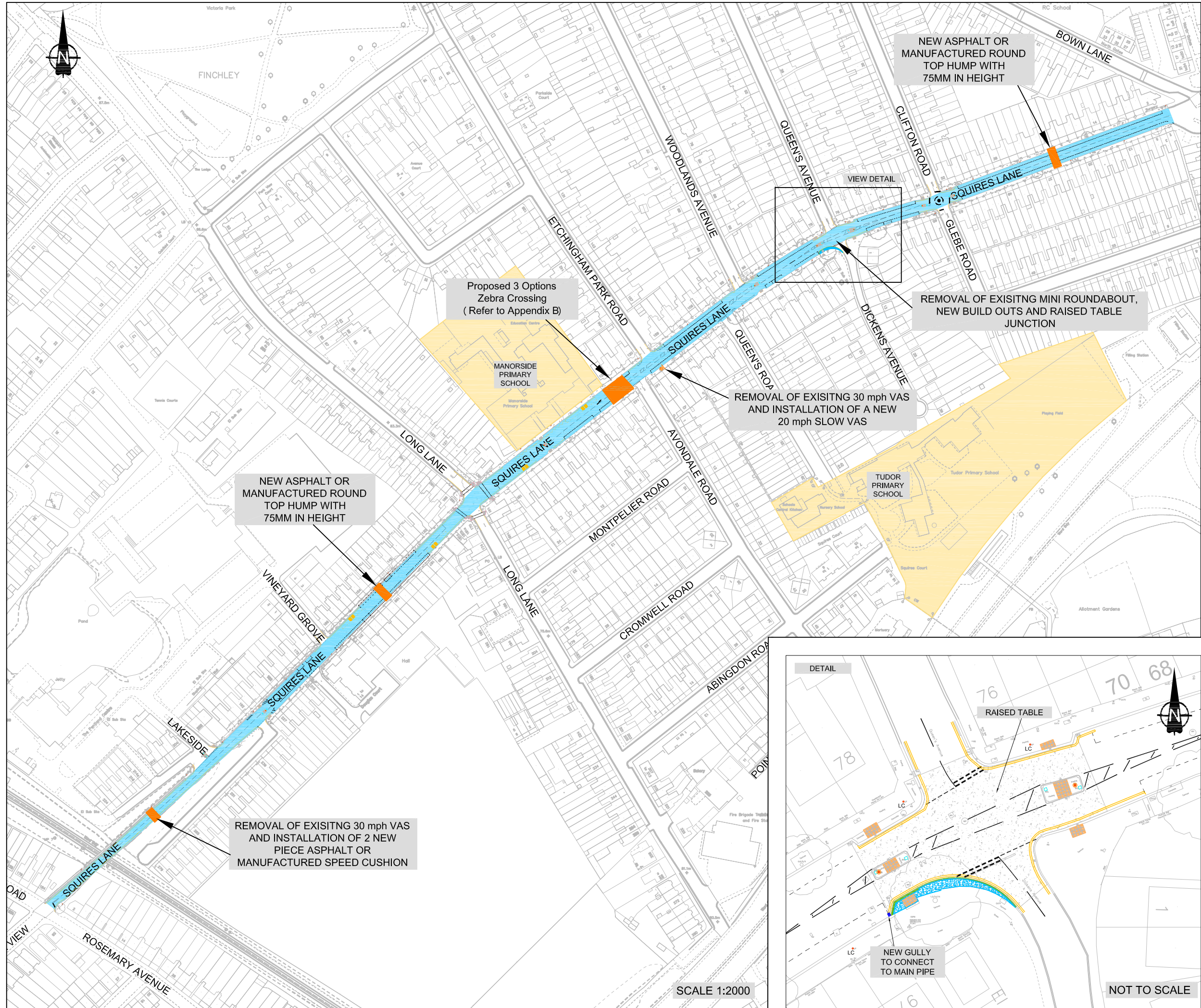
Client: **BARNET LONDON BOROUGH**

Scheme Ref: C2016_BC/000874-27
 Scheme title: **SQUIRES LANE**

Drawing title: **20 mph and Traffic calming measures Option A**

Scale @ A3: AS SHOWN			
Design	Drawn	Checked	Approved
CLM	CLM	SHC	GL
Date: 20/03/17	Date: 20/03/17	Date: 23/03/17	Date: 24/03/17

RE Traffic and Development
 London Borough of Barnet, Barnet House,
 11th Floor Highways, 1255 High Road,
 Whetstone, London N20 0EJ
CAPITA BARNET



SCALE 1:2000

SAFETY, HEALTH AND ENVIRONMENTAL INFORMATION

For construction, maintenance, cleaning and demolition risk refer to the relevant method statements and risk assessments related to this task for scheme Ref. C2016_BC/000874-27. In addition to the hazard/risks normally associated with the types of work detailed on this drawing take note of above. All works on this drawing will be carried out by a competent contractor working to a provided appropriate method statement and risk assessment.

NOTES:

LEGEND

- 20 mph speed limit and repeated 20 mph Roundel Carriageway marking
- 20 mph speed limit terminal sign (600 mm diameter) erected back to back with 30 mph sign will be required at all junctions.

This product includes mapping data licensed from Ordnance Survey with the permission of the Controller of Her Majesty's Stationery Office. © Crown copyright and database right 2016. All rights reserved. London Borough of Barnet. Licence No 100017674

REVISION

Revision Details	Design/Check	Date	Rev.
Initial Issue	CLM / SHC	20.03.17	0

Purpose of Issue

FOR INFORMATION

Client:



Scheme Ref. C2016_BC/000874-27

Scheme title

SQUIRES LANE

Drawing title

20 mph and Traffic calming measures Option B

Scale @ A3: AS SHOWN

Design	Drawn	Checked	Approved
CLM	CLM	SHC	GL
Date: 20/03/17	Date: 20/03/17	Date: 23/03/17	Date: 24/03/17



C2016_BC/000874-27-Option B-01

Rev. 0